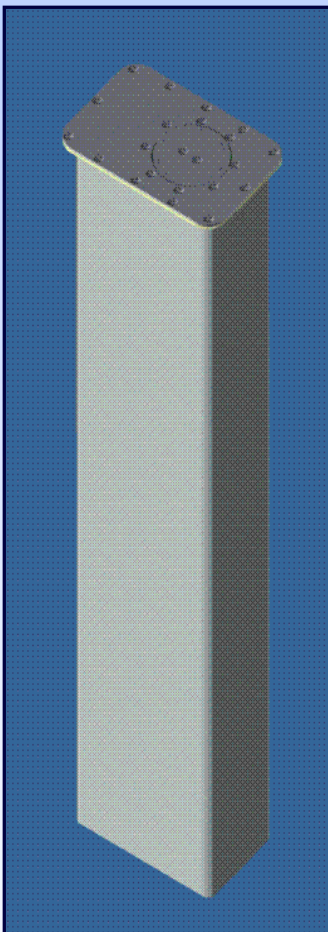


Automatic Bollard

(Electric Retractable Type)

Electric Automatic Bollards are intended for applications where automatic operation is necessary, but where flush mounting is required when the bollard is in the retracted state.

Multiple electric bollards can be operated together to secure larger openings in place of an automatic gate system.



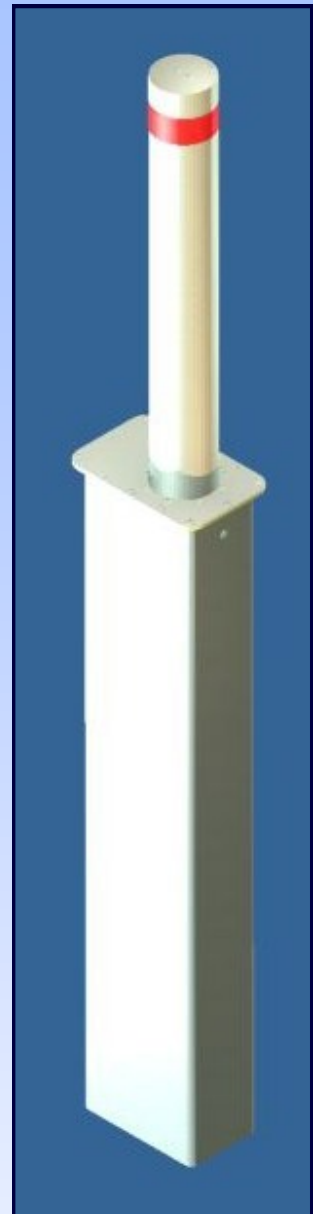
Retracted Position



Convenient remote control operation

Product Features:

- Fast operating speed.
- Automatic overload detection.
- Grade 316 stainless steel surface plate and post.
- Polymer post guides for smooth, silent operation.
- All in-ground components are Zinc Plated for superior corrosion protection.
- Battery back-up to maintain site security in the event of a power outage.
- Solar Powered option available.



Extended Position

Specifications

Product Description	In-ground, automatic electric bollard
Corrosion protection	Electrolytic zinc to all in-ground components, above ground components are grade 316 stainless steel
Decorative Finish	Brushed stainless steel
Material	114mm diameter post – 5mm thick
Height	800mm above ground, 1300 mm in-ground
Fixings	Concrete in-situ
Operating Speed	160 mm/sec (no load), 135 mm/sec (full load)
Weight	81Kg fully assembled

CONTACT:

Phone: (08) 6305 0511
Fax: (08) 9246 9963
Email: ask-us@accesstechnologies.com.au
Web: www.accesstechnologies.com.au
www.retractablebollards.com.au

